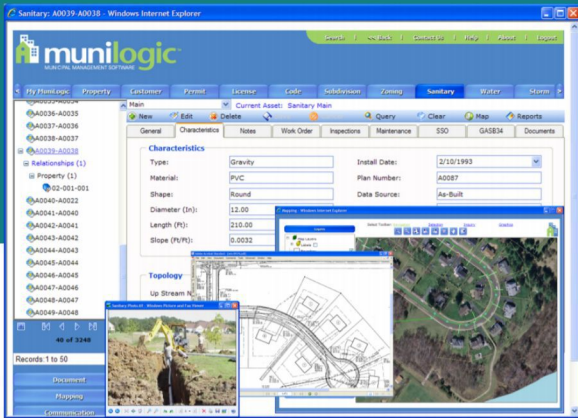


MuniLogic

# Sanitary Module

Municipal organizations are under more pressure than ever to eliminate sewer overflows and reduce inflow and infiltration. MuniLogic SE helps you track all inspection and maintenance activity, sanitary sewer overflows and asset value. Enhance your system management by integrating GIS mapping, document management, and creating relationships with your other geographic data.



- Quickly identify the age and condition of assets.
- Manage sanitary sewer overflows (SSO) and reporting to DEP.
- Maintain a complete history of all inspection and maintenance activities.

- Create work orders with full assignment and scheduling to crews.
- Maintain asset value using various methods for GASB34 reporting.
- All assets are linked to other MuniLogic SE modules for Mapping, Reporting, and Documents.

## READY TO SIMPLIFY SANITARY PROCESSES?

We're happy to share more information or schedule a demo.

[info@muniologic.com](mailto:info@muniologic.com)

[www.muniologic.com/contact](http://www.muniologic.com/contact)

877-343-9116

MuniLogic tools simplify how you manage your local government. Originally developed by the engineers at Carroll Engineering, the MuniLogic platform is based on decades of experience supporting local government needs. We're committed to technology that's simple to learn, easy to use, and supports the needs of your constituents, staff, and government.