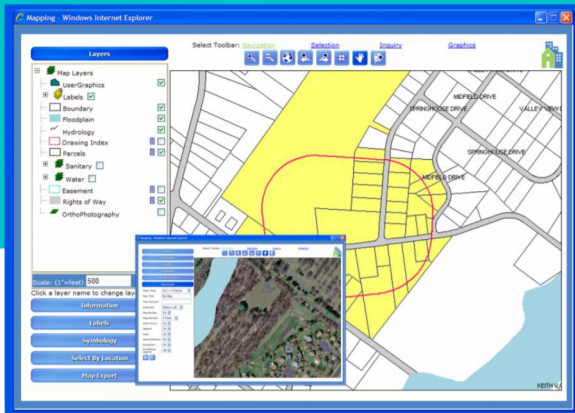


MuniLogic

# Mapping Module

Enjoy robust GIS capabilities that link assets to the relevant records in the other MuniLogic modules. Because MuniLogic integrates this functionality, there's no need to buy, maintain, or use a separate GIS system.



- Control layer functionality, including; turning on/off, changing layer name, grouping, priority, color, symbol, and style.
- Full navigation features; including zoom in/out, pan, scale, etc.
- Ability to retrieve and view information contained within the map layers.
- Ability to spatially select features based upon other layers.
- Ability to perform a radius selection for construction or other activities.
- Ability to add graphics to the map in the form of lines, text, polygons, etc.
- Produce PDF files from output maps.
- View all documents linked to a mapped asset with a click of a button.
- Ability to display layers by characteristics.
- Label features by information contained within the layers.
- MuniLogic supports images to display digital orthophotography.
- Send queries to specific modules for viewing and vice-versa.
- Supports data within a state plane coordinate system
- Ability to produce output maps in various sizes based upon scale or the current view.

## READY TO SIMPLIFY YOUR MAPPING DATA?

We're happy to share more information or schedule a demo.

[info@muniologic.com](mailto:info@muniologic.com)

[www.muniologic.com/contact](http://www.muniologic.com/contact)

877-343-9116

MuniLogic tools simplify how you manage your local government. Originally developed by the engineers at Carroll Engineering, the MuniLogic platform is based on decades of experience supporting local government needs. We're committed to technology that's simple to learn, easy to use, and supports the needs of your constituents, staff, and government.